



YEAR BUILT
1969



TOTAL BUILDING SQ. FT.
60,661



OPERATING COSTS INC.
PTAX \$7.64



ZONING
I-C



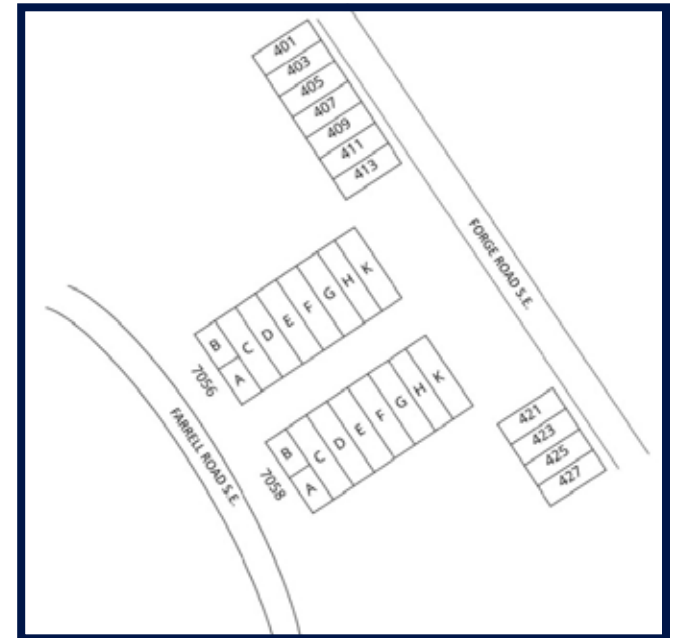
CEILING HEIGHT
14ft to 16ft



PARKING
Surface



UNIT	AREA	AVAILABLE	LOADING	COMMENTS	SPACE PLAN
7058EFG	8,640 SQFT	Immediately	Drive-in Dock and	Combination of modern office and warehouse. Dock and drive-in level doors provide easy access to warehouse. Demisable.	View Plan



PHILLIPS COURT – Having been built in 1969, Phillips Court is one of the longest held assets in the PBA portfolio catering to small bay industrial users who wish to be centrally located and in close proximity to major interchanges including Glenmore, Blackfoot, and Macleod Trail. Units range in size from approximately 1,500 to 2,800 square feet with a combination of drive-in and dock doors. The unique pie shaped lot has a stepped courtyard that creates a great environment for tenants to connect and interact with neighbours.

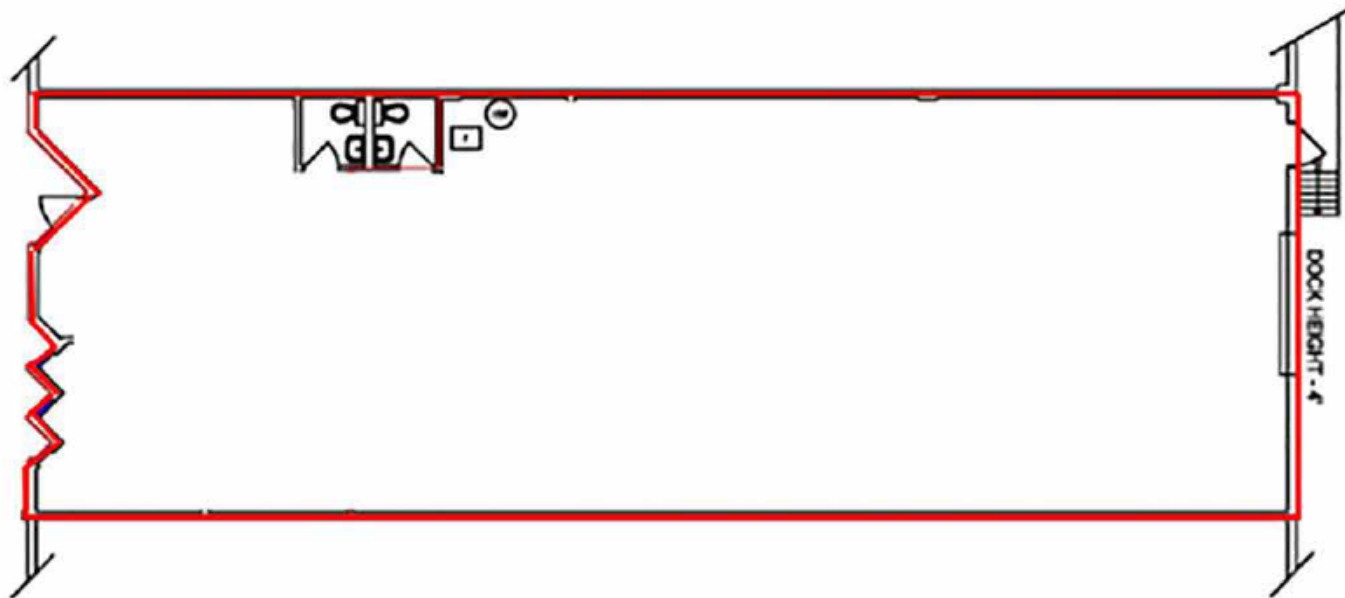


Have a question? Contact us.



Dahlya Molina
Director, Leasing
DMolina@pbaland.com
(403) 777-2712

7056E



7058EFG

